



The World is Changing Join the **Transition Team!**

IMPACT HUB MANILA | MANILA@IMPACTHUB.NET | +63 917 9066 156 | METRO MANILA, PHILIPPINES

IMPACT HUB NETWORK at a glance

We are a global network of collaborative spaces, entrepreneurial communities, and capacity building programs that inspire, connect, and enable impact making us the largest network and change makers in the world.

17,000+
MEMBERS

102+
CITIES

50+
COUNTRIES



Development-Driven

The Impact Hub network is dedicated to creating universal sustainable solutions.

The United Nations Office in Geneva acknowledges Impact Hub as a driver of community engagement, helping not only to foster but also to extend the efforts directed to tackle the SDGs via entrepreneurial and innovative solutions.



Asia Pacific

- **Jakarta** *Indonesia*
- **Kuala Lumpur** *Malaysia*
- **Kyoto** *Japan*
- **Manila** *The Philippines*
- **Phnom Penh** *Cambodia*
- **Taipei** *Taiwan*
- **Shanghai** *China*
- **Waikato** *New Zealand*
- **Yangon** *Myanmar*



OUR INCUBATION SPACES



WHY ARE WE HERE?

GENERATION IMPACT FELLOWSHIP PROGRAM

The Generation Impact Fellowship is a multi-city entrepreneurship program designed for young future leaders aimed to inspire, select and support innovative ideas with the potential to grow to be sustainable ventures.

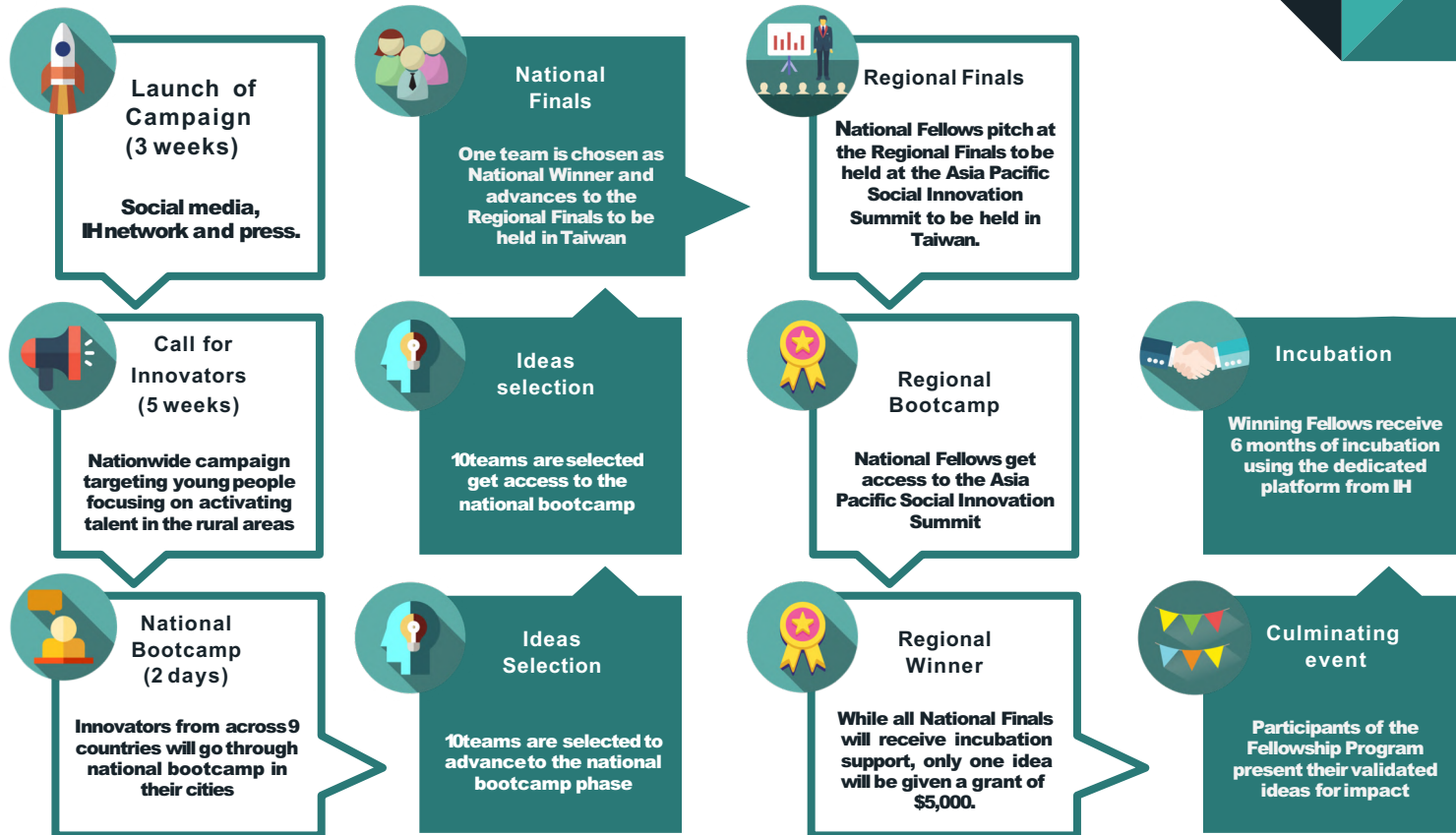
The year long program aims to equip and empower young innovators from rural areas among the 9 cities with innovative ideas that will contribute towards the achievement of the Sustainable Development Goals (SDGs).

National winners per city will compete at the Regional Finals to be held at the Asia Pacific Social Innovation Summit in Taiwan on May 2020. One Regional winner will receive a grant of \$5,000 and a 6-month tailored incubation program.

Overarching goal is to address the following SDGs.



Program Overview



Program Timeline

IMPACT
HUB

IMPACT
HUB



JANUARY - FEBRUARY 2020

MARCH - MAY 2020

JUNE - DECEMBER 2020

ACTIVATE

IDEATE

INCUBATE

Program Targets (with 9 participating Hubs)

IMPACT
HUB



1,000,000
reached through
online campaigns



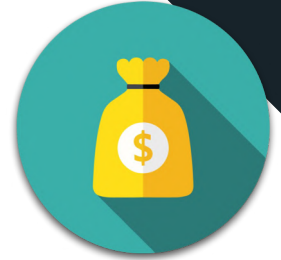
200 applications
across
the region



1,000+
Event attendees at
the Regional and
National events



30-40
Impactful, aspiring
young leaders to
receive training



1
Fellow receives
\$5,000 to kickstart
their business idea

Program Outputs



**Young People
Engaged**



**Join Online
Sessions**



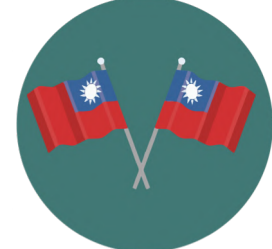
**Join Generation
Impact
Fellowship
Program**



Send Ideas



**Select
National
Winners**



**Send to Taipei for
Social Innovation
Summit in Taiwan
to be incubated**

Program Targets (with 9 participating Hubs)

The program will focus on targeting entrepreneurs in rural areas of the nine cities, made possible by leveraging the power of technology to teach the entrepreneurship content online.

Due to the accessibility of the platform, we will encourage entrepreneurs who come from disadvantaged backgrounds to join, including those with disabilities, women, and minority groups.



REGIONAL STRATEGY

Regional Strategy

Recognizing each Hub's strength and geographic relevance to the topic, Impact Hubs in Asia true to its collaborative nature will work to create the best experience for the program.

Hosting the Challenge on the ground will be the Impact Hubs in Asia Pacific.

To drive a holistic approach to the program, we will engage the regional ecosystem to ensure a well-executed program.

Participating Impact Hubs

- Jakarta
- Kuala Lumpur
- Kyoto
- Manila
- Phnom Penh
- Shanghai
- Taipei
- Waikato
- Yangon

Regional Outreach and Support

Impact Hub **takes pride in being present all across Asia Pacific.** This reach has given the regional network a unique position to **effectively and efficiently influence conversations, curate events, design programs and empower entrepreneurs that aligns with our collective goal of making impact happen.**

How campaigns through Impact Hubs add value:

- **Regional reach**
- **Curated communication strategy**
- **Access to the strong local community of startups**
- **Access to the local Hubs' network of partners and mentors**

Aligned with the SDG's thrust in catalyzing solutions, national winners will be chosen based on the viability of their idea that is basen the reach of the program and source solutions from across the region.

Participating Impact Hubs

- Jakarta
- Kuala Lumpur
- Kyoto
- Manila
- Phnom Penh
- Shanghai
- Taipei
- Waikato
- Yangon

Generation Impact Fellowship Program

Unique value proposition

IMPACT
HUB



Cost Efficient

Impact Hubs put impact first, and as a result are focused on creating cost effectiveness so that funds can create as much impact as possible. We artfully find the balance between lean and high impact models.



Curated Awareness

We can drive the focus on the key topic that we deem important to highlight. This allows awareness for both the industry and the people.



Effective

With existing networks of local entrepreneurs and experts across sectors, staff experienced in running programs, the Program can easily source ventures and match them with community partners.



Sustained

Impact Hubs offer holistic, ongoing support for startups beyond a program's end. A startups journey can be long, and we ensure we can sustain their impact and growth through community, mentoring, and space.



Globally Linked, Locally Strong

Impact Hub is present across the world in over 110 cities, and proudly share the network with our entrepreneurs and community. We curate strong, local connections, to foster the local ecosystems.

REGIONAL BUDGET

Generation Impact Fellowship Program

Program Output

IMPACT
HUB

200 engaged young leaders

Casting the net throughout Asia Pacific to find the next generation of impact entrepreneurs

**At least 50 teams / entrepreneurs
to receive training in National Bootcamp**

Intensive Training for the Cohort finalists and deep dive into growing their enterprises

At least 9 young leaders flown to Taiwan for the Regional Finals

To be held at the Asia Pacific Social Innovation Summit

**1 regional fellow directly funded and supported fellow
across the Impact Hubs in the region**

Pure grant to fellow with, 6 months of incubation support from Impact Hub

Regional Community Engagement

*Access to Impact Hub's network of media partners, mentors, facilitators
and subject matter experts*



Program Budget

Details	Activity	Amount	Total
Ideation Phase	Program launch, application phase	\$2,750	\$24,750
Innovation Phase	National bootcamp & regional finals	\$10,000 each city	\$90,000
Innovation Phase	Regional Finals Funded trip to Taiwan	\$4,000 per city <i>*Taipei will get half because of reduced cost</i>	\$34,000
Incubation Support	6 months Community Support	\$5,000 for winning city	\$5,000
Innovation Phase	Regional Winner	\$5,000	\$5,000
Program Management <i>(Design, Communication etc)</i>		\$3,250	\$3,250
Regional Logistics, & Administration		\$18,000	\$18,000
TOTAL			\$180,000

Program breakdown

Details	Program Fee
9 Impact Hubs' fee	\$157,500
Prize money & support to entrepreneurs	\$10,000
Program Management	\$3,250
Regional budget (IHC)	\$9,000
Administration budget (for IHT)	\$9,000
TOTAL	\$180,000

Breakdown per IH

Details	Program Fee
8 Impact Hubs	\$16,750
IH Taipei	\$14,750
Program Management <i>(design, coms % regional team)</i>	\$3,250
Regional budget <i>(budget contribution)</i>	\$9,000
Administration budget <i>(IHT remittance)</i>	\$9,000
TOTAL	\$180,000